



Miombo Network Governance



What has been done?:

1. Review and refine a draft science plan.
2. Survey and membership database (updated frequently).
3. Communication and information sharing (list server and FrameWeb)
4. Data training and dissemination
5. MN website: host by GOF-GOLD.
6. Promote, design and develop of collaborative actions.
7. MN conference

2. Membership database

- More than 100 people listed (MW countries, USA, UK, Portugal, Brasil, New Zealand, others).
 - 60% are from research institutions, 26% from conservation NGOs and/or institutions, 8% from private sector and 4% from government institutions.
- => good capacity for training and capacity building within the network.



2. Membership database

MN main interests:

- MW ecology (biodiversity, taxonomy, vegetation dynamics and nutrient cycling - 52%);
- LULCC and planning (32%);
- Global climate change (24%);
- Fire ecology (20%); and
- MW management and silviculture (16%)

- Cross cutting issues:
 - carbon dynamics and the REDD+ issues.
 - Use of remote sensing and GIS



2. Membership database

Focus of MN activities:

- i) information and knowledge sharing,
- ii) collaborative applied research;
- iii) flow of information to managers and decision-makers; and
- iv) community engagement.

Based on this agreement the **vision of the MN should be oriented to conduct collaborative (applied) research and information and data sharing that leads to Informed Decision-making.**



3. Communication and information sharing (mailing list and Frameweb)

- A mailing list was created (host by the University of Edinburgh , UK):

miombo-network@mlist.is.ed.ac.uk

- Includes members from other networks (OSFAC, REDLATIFF, SAFNET)



Tags

- aerial **africa** bangladesh
- biodiversity** buffer "burkina faso" cameroon carbon "carbon rights" cbnrm climate "climate change" co-management
- comanagment **communities** "community conservation areas"
- conservancy **conservation** cross-sectoral decentralization
- drought** drylands
- economics** environment
- farmer fmnr "food security"
- forest** forestry forests
- forêts gestion gfn **"land management"** legal
- livelihoods madagascar
- miombo **"natural resources"**
- naturalles niger nrm oxfam plan "protected areas"
- regeneration** regreening "rm portal" **sahel** twitter

[Manage Tags](#) [View All](#)

Pending +

- Welcome** All Content News Tools & Resources Discussions Blogs Network

Description



The Miombo Network started as an effort of several African scientists who intended to bring together scientists in the region and abroad, with a common interest in the Miombo woodlands and the Miombo region more broadly.

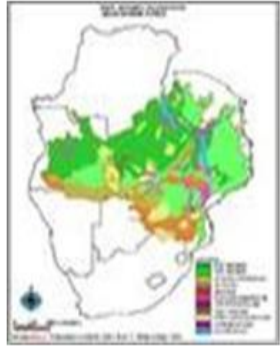
The Miombo Network worked to actively engage many stakeholders in the region, with one of the goals to collect a large set of remotely sensed data to be shared with scientists and governments in the miombo region.

This data has been used for various studies such as:

- Patterns, causes and rates of change in land cover in relation to land use;
- Consequences of land-use and land-cover changes on regional climate, natural resources, hydrology, carbon storage and trace gas emissions.

Network participants serve as focal points for distribution of the data and skills in their regions, to:

- Enhance networking of RS data users in the region;
- Create of a mailing list of RS data users in the Miombo region countries and exchange of information and experiences between users in the application of Landsat data;
- Expand distribution, analysis and application of Landsat data archive;
- Create of data bundles, by country, and wide distribution of such bundles using DVD and web technologies; and
- Increase application of RS data in mapping and other applications in support of land management, global environmental change analysis and



Popular Content

- 🗨️ [How can agricultural expansion -- one of the main threats to the Miombo woodlands -- be addressed?](#) ▾
- 📄 ["Remote Sensing of Biomass in the Miombo Woodlands of Southern Africa: Opportunities and..."](#) ▾
- 📄 [Managing the Miombo Woodlands of Southern Africa: Policies, Incentives, and Options for the Rural..."](#) ▾

BROWSE

Up to top Up one level

- Land Management
 - Co-Management Community
 - Sustainable Land Management in Africa
 - Transfer of Management for Protected...
- The Miombo Network**
- National Steering Committee for Forest...

Tags

aerial **africa** bangladesh
 biodiversity buffer "burkina faso"
 cameroon carbon "carbon rights" cbnrm climate "climate change"
 co-management comanagment **communities**
 "community conservation areas" conservancy **conservation**
 cross-sectoral decentralization drought drylands
 economics environment farmer fmnr "food security"
forest forestry forets forêts gestion gfn **"land management"** legal
 livelihoods madagascar miombo **"natural resources"**

The Miombo Network

Topic

EN FR ES

Ask a Question Add Content Search Content and Members

Welcome All Content News **Tools & Resources** Discussions Blogs Network

Show All | Filtered By

<u>Helpful</u>	<u>Title</u>	<u>Type</u>	<u>Author</u>	<u>Date Modified</u> ▾	<u>Popularity</u>
0	"Remote Sensing of Biomass in the Miombo Woodlands of Southern Africa: Opportunities and..." ▾	Online Resource	Natasha Ribeiro ▾	2012-4-12	12
0	Miombo Ecoregion Vision Report ▾	Document	Tom Erdmann ▾	2012-3-20	21
0	Managing the Miombo Woodlands of Southern Africa: Policies, Incentives, and Options for the Rural..." ▾	Online Resource	Karishma Patel ▾	2012-1-18	20

4. Data Training initiative –GOFC GOLD

1st half: USGS


- USGS data archive
- Data collection
- Proposal development (START: \$5K)

2nd half: Boston University

- Data analysis and interpretation
- LULCC methods



5. MN website: host by GOF-GOLD.



GOF-C-GOLD GLOBAL OBSERVATION OF FOREST AND LAND COVER DYNAMICS

[Home](#) > [Regional Networks](#) > **Miombo**

MIOMBO - Southern Africa Regional Network

[Background History](#) | [Proposed Science Plan](#) | [Recent publications \(2007-2010\)](#) |



Background History:

Miombo is a vernacular word that has been adopted by ecologists to describe those woodland ecosystems dominated by trees in the genera *Brachystegia*, *Julbernardia* and *Isoberlinia* of the family Fabaceae, subfamily Caesalpinioideae (CSA/CCTA 1960; Wild and Fernandes 1967). Such woodlands extend across about 2.8 million km² of the southern sub-humid tropical zone from Tanzania and Zaire in the north, through Zambia, Malawi and eastern Angola, to Zimbabwe and Mozambique in the south. Their distribution largely coincides with the flat to gently undulating African (early Tertiary) and east African (Miocene) elevation surfaces

- [GTOS HOME](#)
- [GOF-C HOME](#)
- [OVERVIEW](#) >
- [CALENDAR](#)
- [ORGANIZATION](#) >
- [LAND TEAM](#)
- [FIRE TEAM](#)
- [NETWORKS](#)
- [WORKING GROUPS](#)
- [PARTNERS](#) >
- [DATA](#) >
- [DOCUMENTS](#) >
- [SITEMAP](#)

7. Collaborative Research: SEOSAW (A socio-ecological observatory for the southern African woodlands)

SEOSAW will:

- **Collate and analyze the existing plot data for the region** (>1000 plots). This will be the first step in building a community of practice of scientists working to understand global change in the woodlands (WP1)
- **Analyze the regional variation** in diversity, floristic composition, and functional traits of the woodland, its phylogenetic relationships and functional differences to other savannas (WP 2)
- **Develop measurement protocols and sampling strategies** suitable for woodland ecosystems which capture the social use of woodlands as well as their ecological dynamics, and which are not biased towards 'pristine' areas (WP3).
- **Create a systematic measurement plan** for the high quality permanent plots to assess the carbon balance of the region (WP4)

=> **BIOMASS, GEDI...biomass products 2019**



- Challenges 2013-2016:
 - The network works on a volunteer base
 - Institutionalization is needed
 - Engaging members
 - Proactivity of the members