

**CSIR Meraka Institute
Earth Observation Science & IT**

Fire monitoring in southern Africa

Riaan van den Dool

Overview

Fires in Africa:

-  **Cultural perspective**
-  **Fire management**
-  **Detecting fires from space**
-  **Technology**
-  **Community**

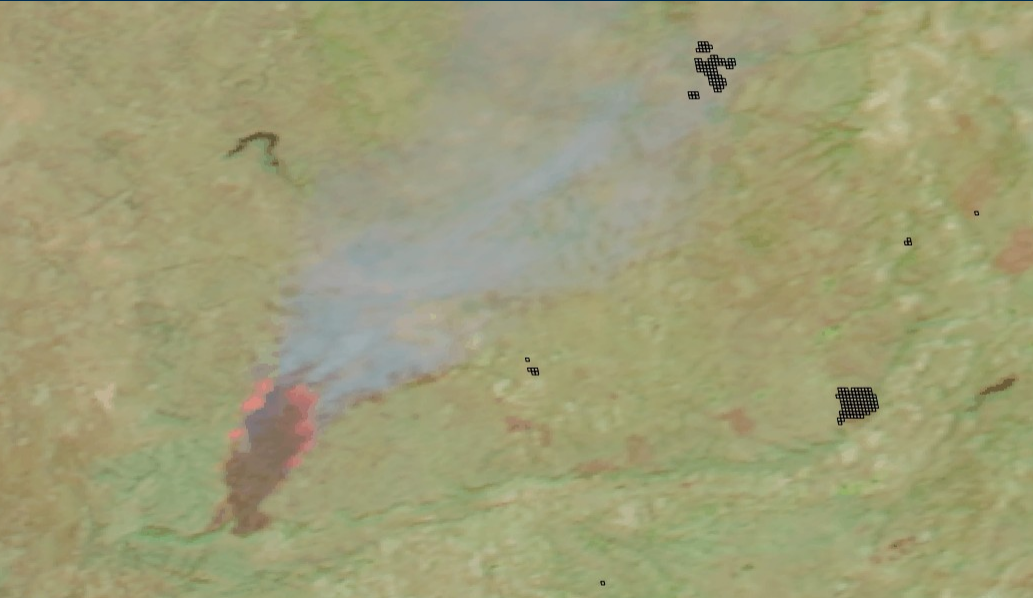
Cultural perspective



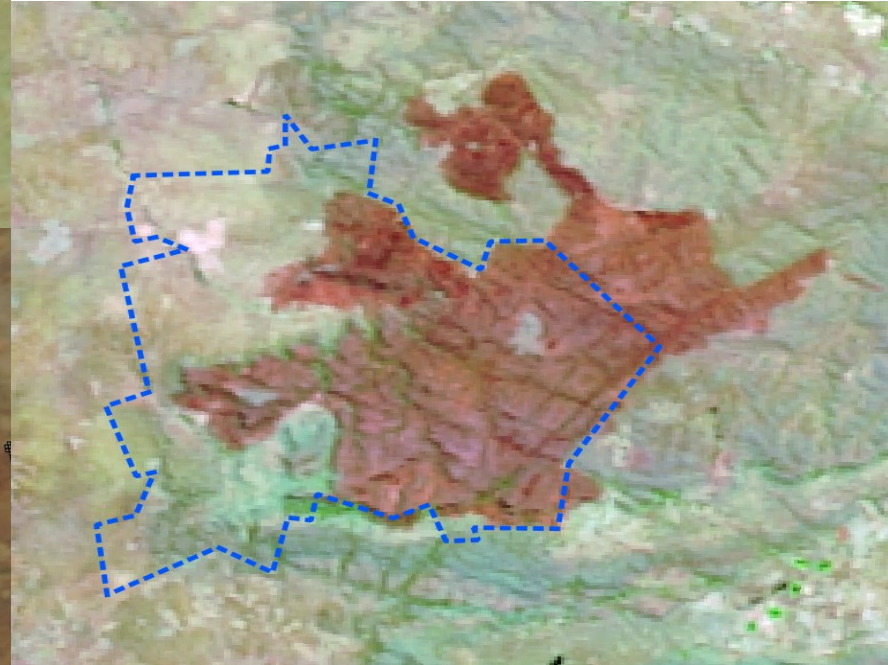
Conflict between authorities and communities during colonial times and up to today.

William C.P. (2010) "Ecology, conservation and climate fire challenges on Uluguru mountain biodiversity hotspot, Tanzania"

Fire management



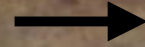
Marakele National Park, South Africa
23 September 2012



Fire management

- Good fires vs bad fires
 - Fire management makes the difference
 - Early vs late dry season burns
 - Education and implementation
- Information needed
 - Before,
 - During and
 - After fires

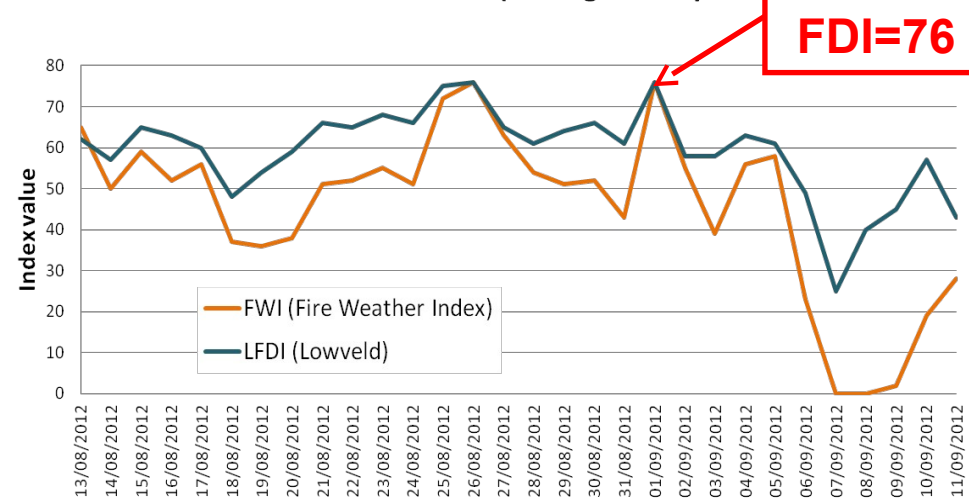
Bella Bella



date	FWI	LFDI	rain_mm	rh_pct	temp_c	uwind_ms	vwind_ms	ws_kmh
2012-08-27	63	65	0.00	29.71	26.69	-4.24	-3.35	19.46
2012-08-28	54	61	0.00	33.40	26.10	-3.61	-3.22	17.41
2012-08-29	51	64	0.00	17.60	28.08	-1.87	-2.28	10.63
2012-08-30	52	66	0.00	17.15	29.69	-2.49	-1.28	10.00
2012-08-31	43	61	0.00	15.19	29.27	-0.03	-0.75	
2012-09-01	76	76	0.00	12.07	32.57	4.59	1.72	
2012-09-02	55	58	0.00	37.11	23.97	-3.80	-3.72	



Sondela Game Reserve (13 Aug - 11 Sept 2012)



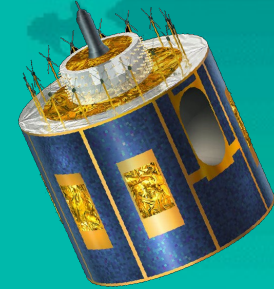
Fire danger describe conditions that are conducive to the ignition, rate of spread and impact of fires.

Fire Danger Indices (FDIs) predict fire danger based on meteorological data

Detecting fires from space

LEO (Polar)

Geostationary Orbit



MSG/GOES – every 15 minutes

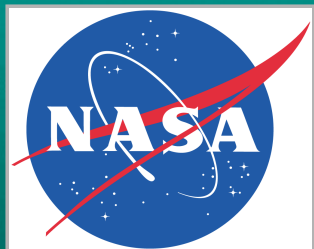
AQUA (~14H00)



NPP



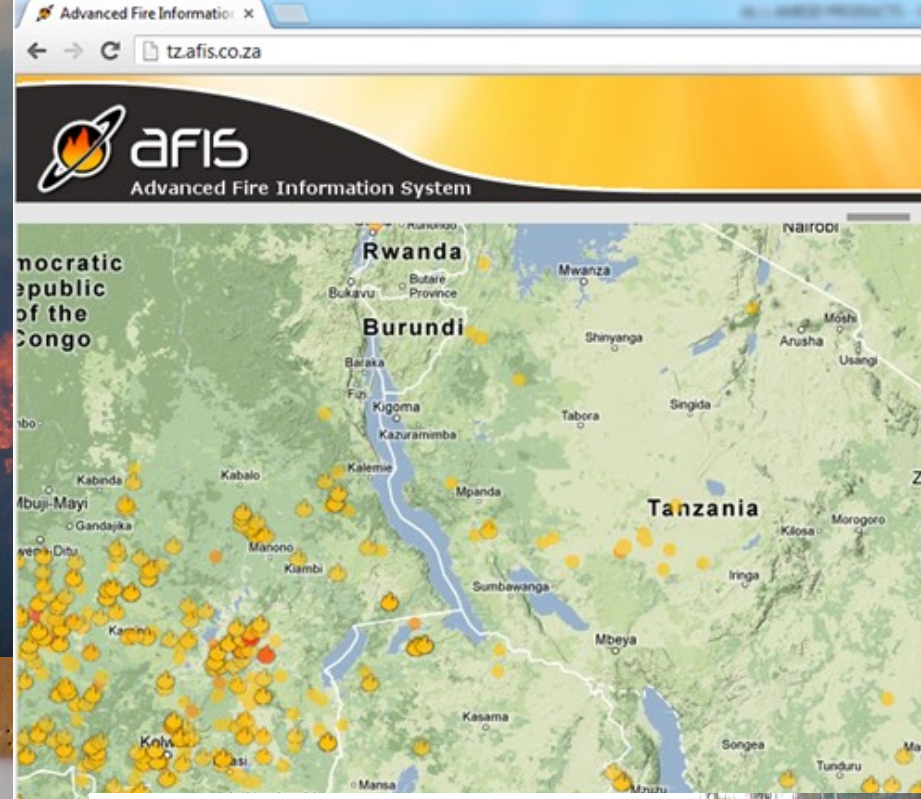
TERRA (~10H00)



Detecting fires from space

EDF: AMESD and
MESA projects



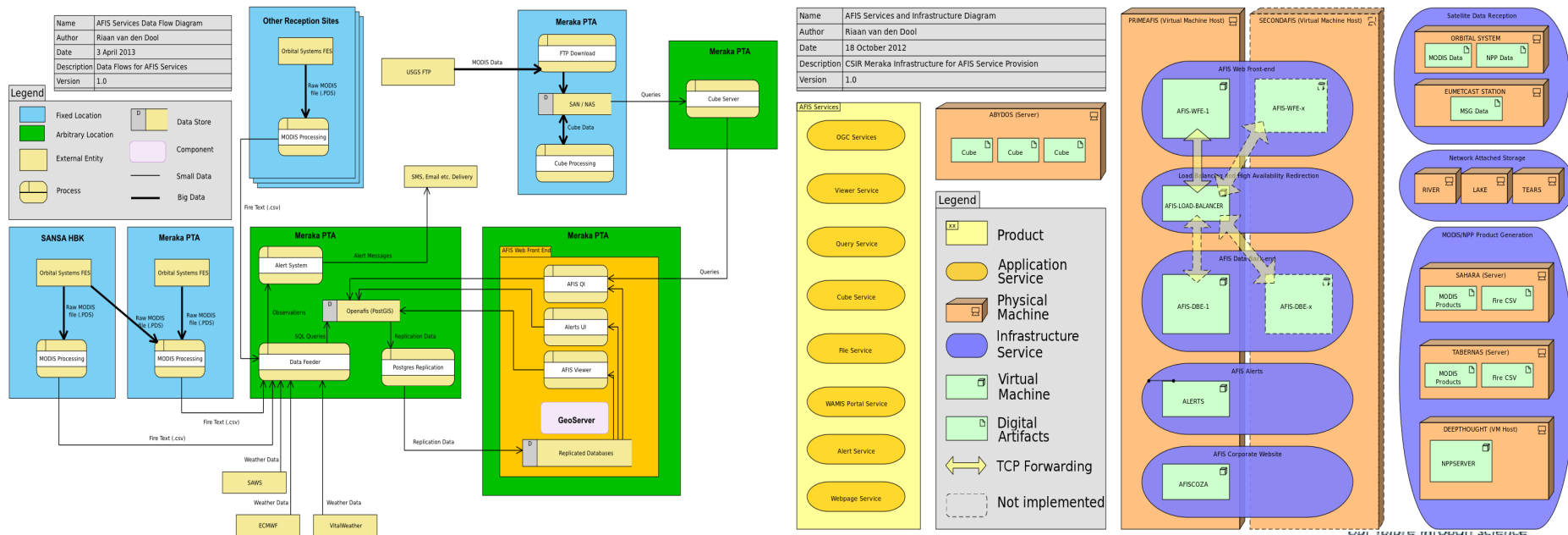


Credit:
Kekilia Kabalimu



AFIS Technology

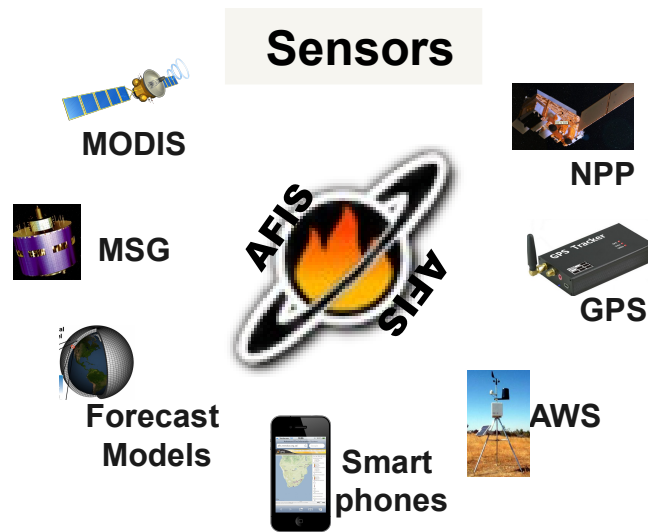
A system to process incoming data streams such as satellite images and weather station readings, interpret the results spatially and alert utilities of actual or potential fire events near transmission lines using email and SMS alerts.



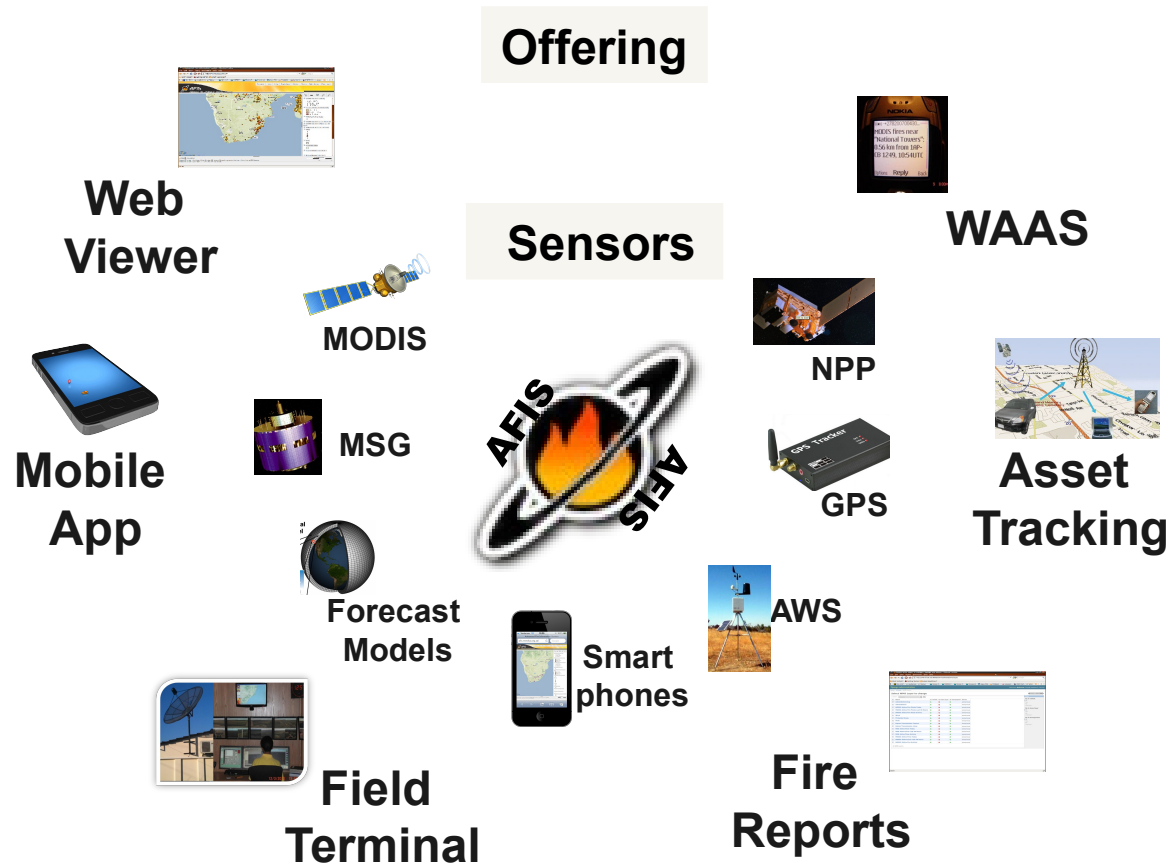
The AFIS Portfolio



The AFIS Portfolio



The AFIS Portfolio



The AFIS Portfolio



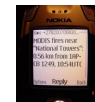
Users



Offering



Web
Viewer



WAAS



Sensors



MODIS



NPP



MSG



GPS



Asset
Tracking



Forecast
Models



AWS



Smart
phones



Fire
Reports



Field
Terminal



Mobile
App



Community

- Community participation
 - Fire management training
 - Fire-fighting teams
 - Record keeping

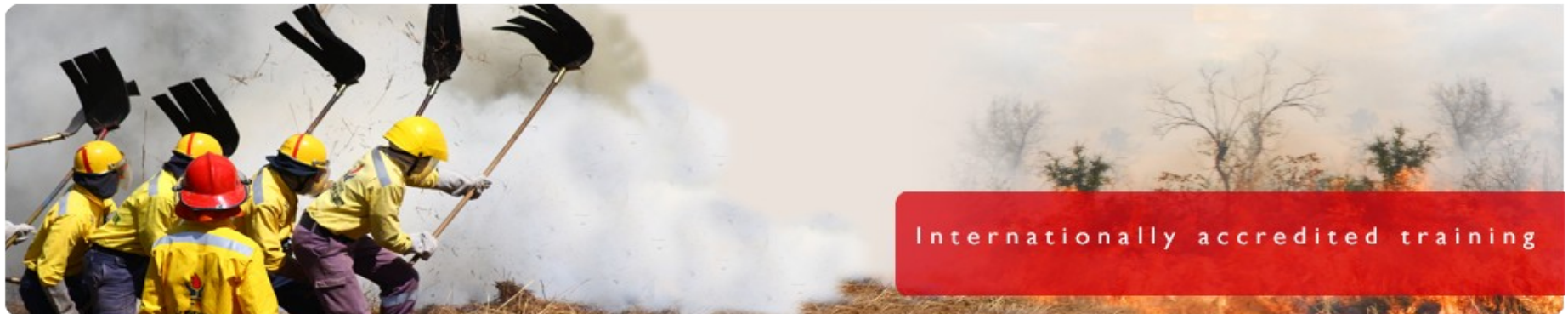


Community

- Social programmes
 - Job creation
 - Training and education



Implementing the EPWP Working on Fire Programme

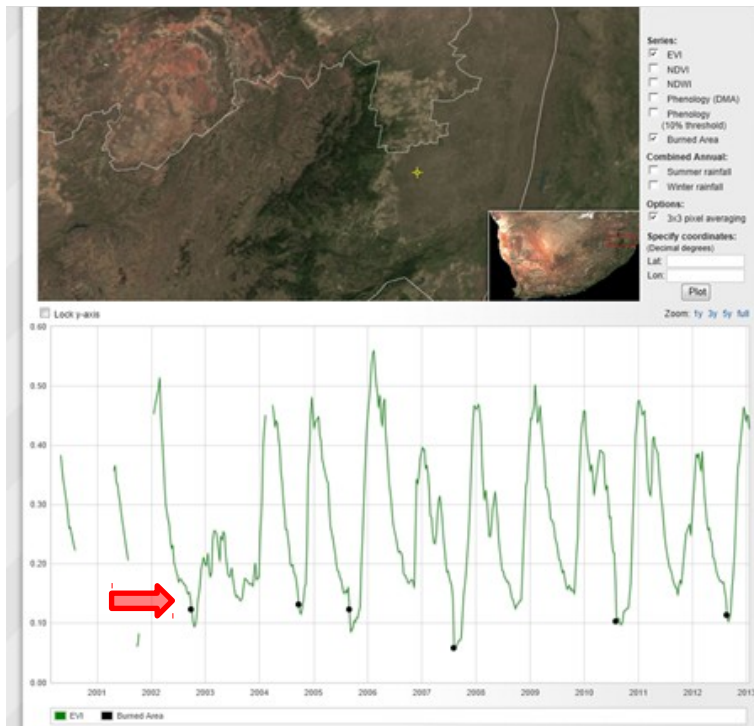


Internationally accredited training

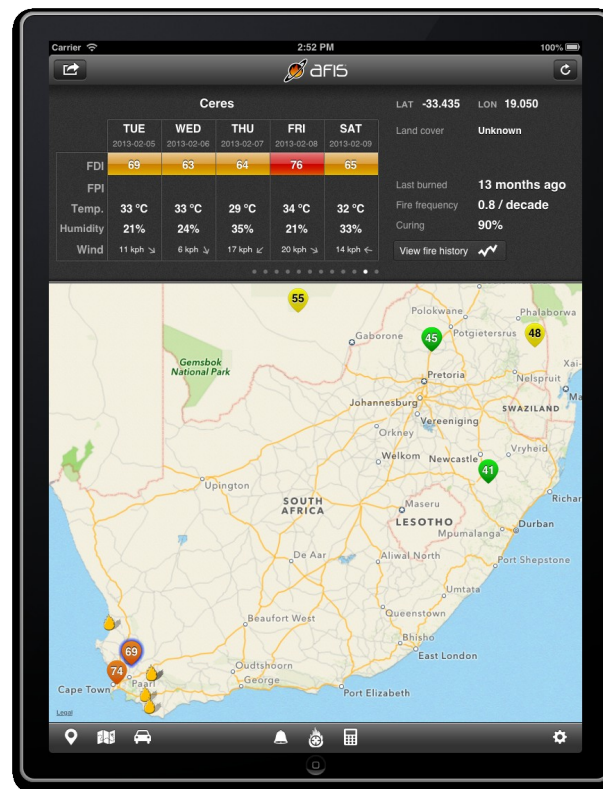
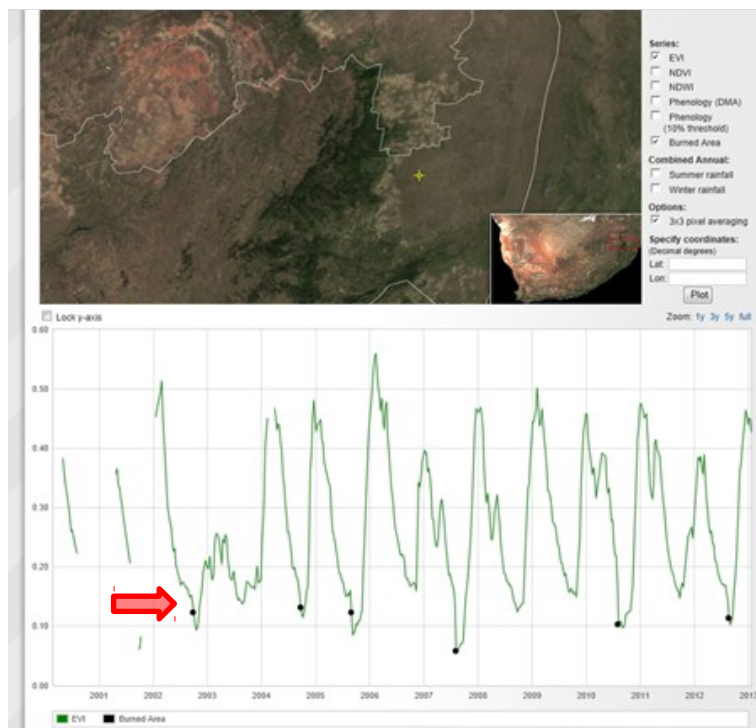
AFIS Developments

- Burnt Area: Derived Products
 - Combined BA: Roy and Giglio
 - Burn sum layer
- MODIS time series from data cubes
- AFIS Mobile App (iOS and Android)
- Local FDI indicators
- Publishing of fire info / alerts (social media etc.)
- GeoPhoto upload: crowd sourcing / user participation

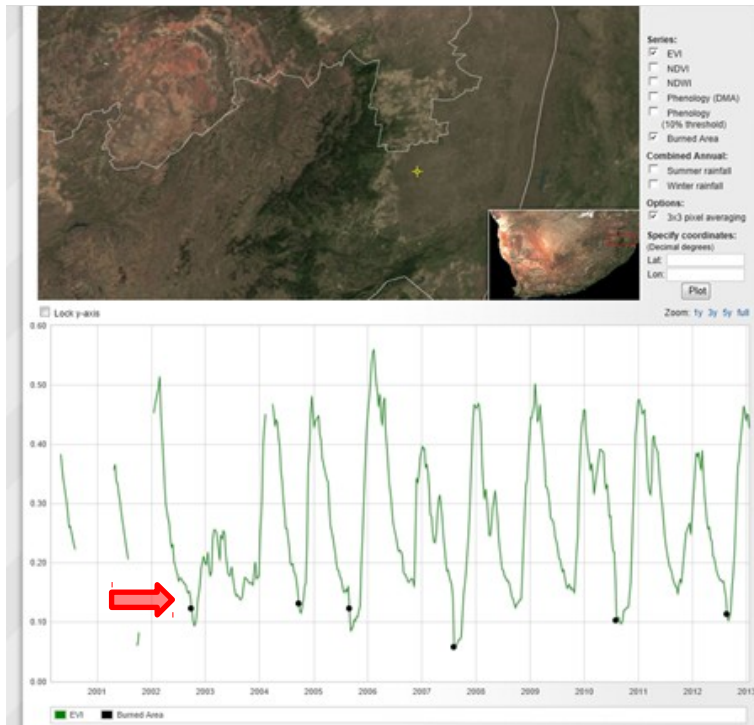
AFIS Developments



AFIS Developments

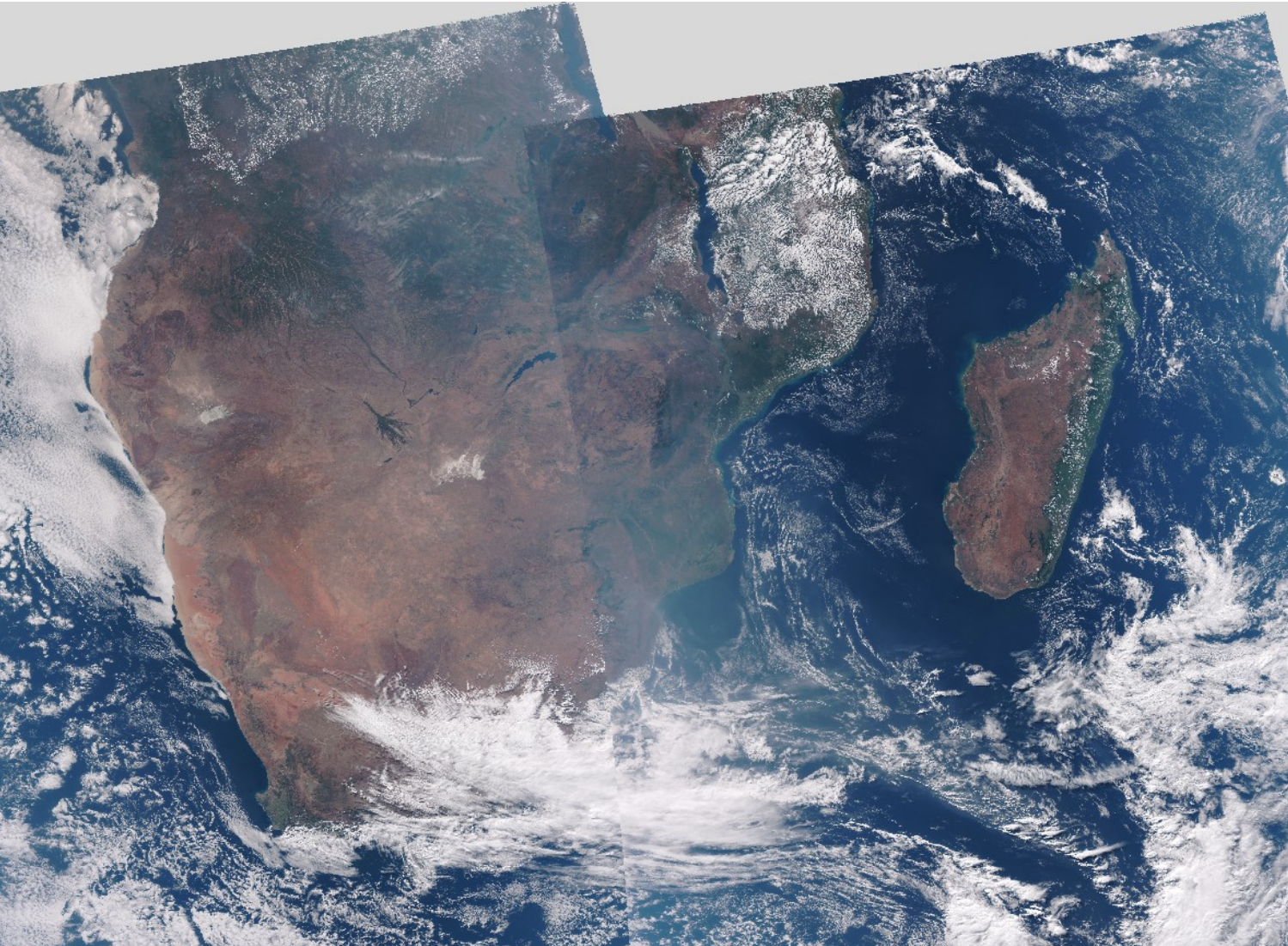


AFIS Developments



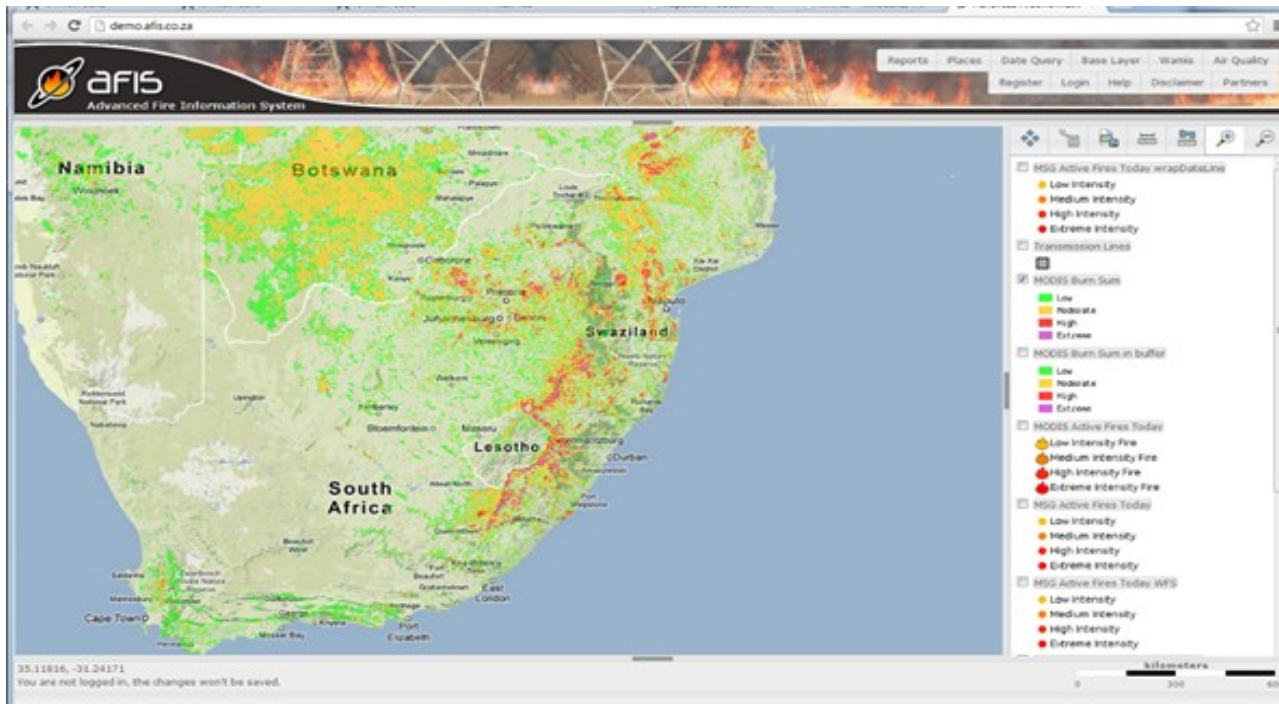
AFIS Developments

NPP: VIIRS Active Fires used operationally in AFIS



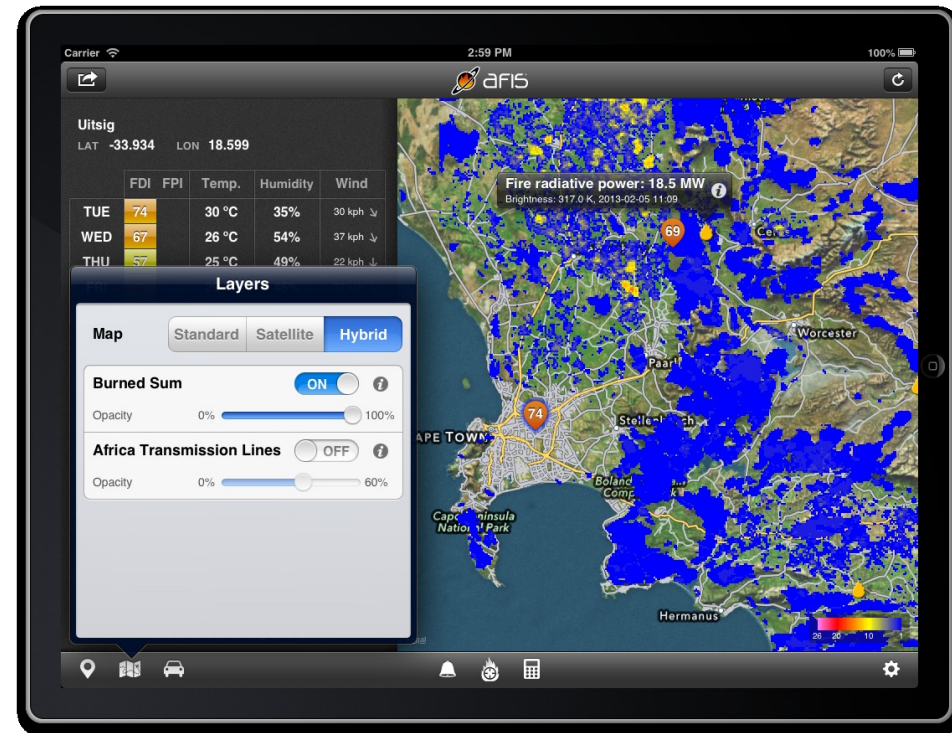
AFIS Developments

MODIS Burn sum product

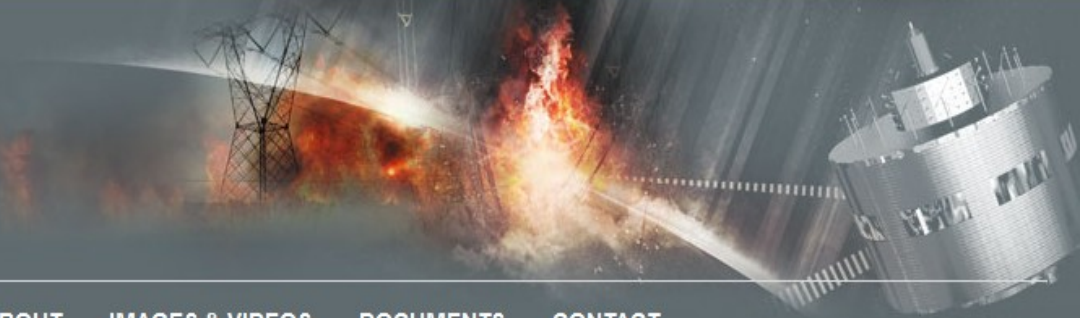


AFIS Developments

- DAFF – National Veld and Forest Fire Act.
- DAFF requested report from Meraka on research findings
- CSIR asked to provide government with AFIS alert and reporting services – including mobile app



AFIS Website



[HOME](#) [LIVE FIRE VIEWERS](#) [ABOUT](#) [IMAGES & VIDEOS](#) [DOCUMENTS](#) [CONTACT](#)

The Advanced Fire Information System

The Advanced Fire Information System (AFIS) is a satellite-based fire information tool that provides near real time fire information to users across the globe.



More about AFIS



AFIS in the Media

<http://www.afis.co.za>

In Conclusion

Fire monitoring in Southern Africa

- ✓ *Not all fires are bad*
- ✓ *Satellite based monitoring solutions help to manage wildfires and minimize destruction caused by fire*
- ? *Role of satellite based monitoring in carbon offset projects*



Acknowledgements

The continued success of the
Advanced Fire Information System
is possible because of
strong partnerships

Queries:
rvddool@csir.co.za

